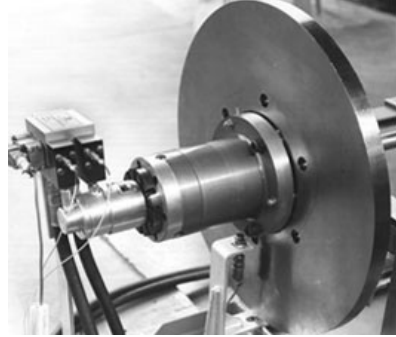
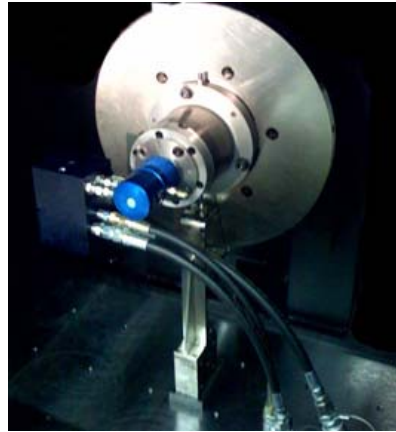


XCITE 1200T CONTINUOUS TORSIONAL SERIES

The Xcite 1200T Continuous Torsional Exciters provide high inertial torque in the frequency ranges required to excite steam turbine rotors, diesel engine crankshafts, and ship power drive trains. The speed range of up to 3600 RPM for the 1200T-9 and 7500 RPM for the 1200T-10 system is ideal for testing a broad range of rotating power generation equipment.



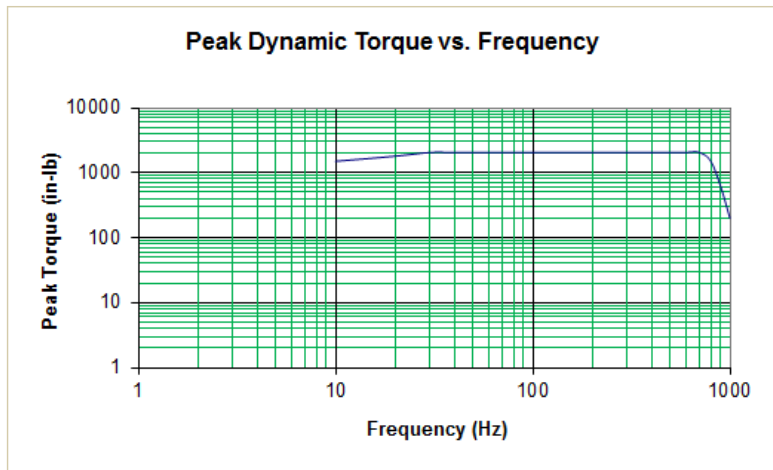
1200T-9 Torsional System



1200T-10 Torsional System

	1200T-9 Torsional System	1200T-10 Torsional System
Exciter Head	ES-315	ES-320
Hydraulic Power Supply	1201B-(DP)-440	1201B-(DP)-440
Master Controller	1104-MOD-ROT	1104-MOD-ROT
Maximum Speed	3600 RPM	7500 RPM
Inertial Torque	2000 in-lb	2000 in-lb
Frequency Range	10 - 600 Hz	10 - 200 Hz
Rotational Disk	19 in-lb-sec(2)	9.5 in-lb-sec(2)
Total Stroke	20 deg	20 deg
Servovalve	15 GPM	15 GPM
Dimensions (L x D)	approx. 20" x 22"	approx. 20" x 18"
Weight	170 lb	130 lb

Xcite 1200T-9 System



Xcite 1200T-10 System

